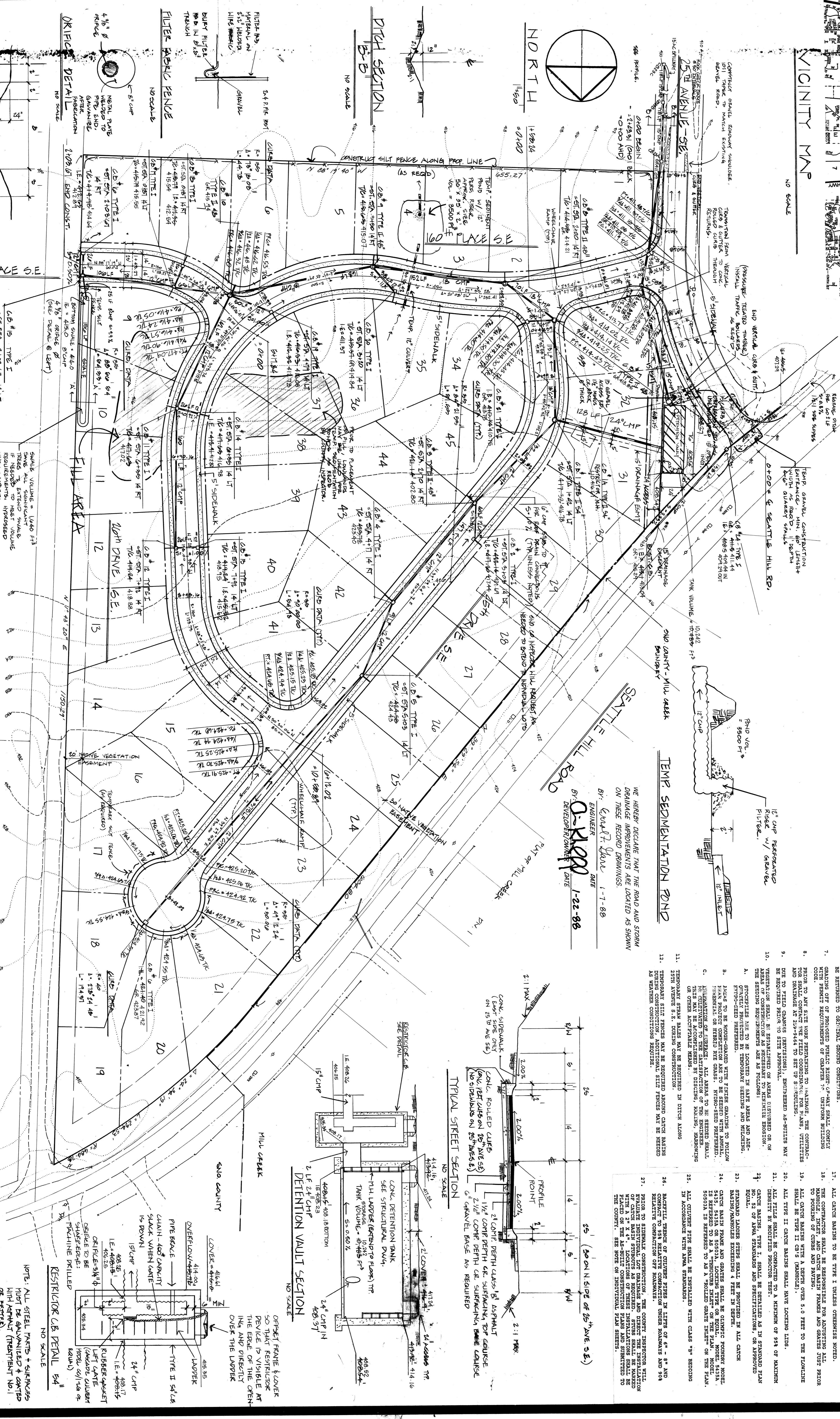


VICINITY MAP
NO SCALE

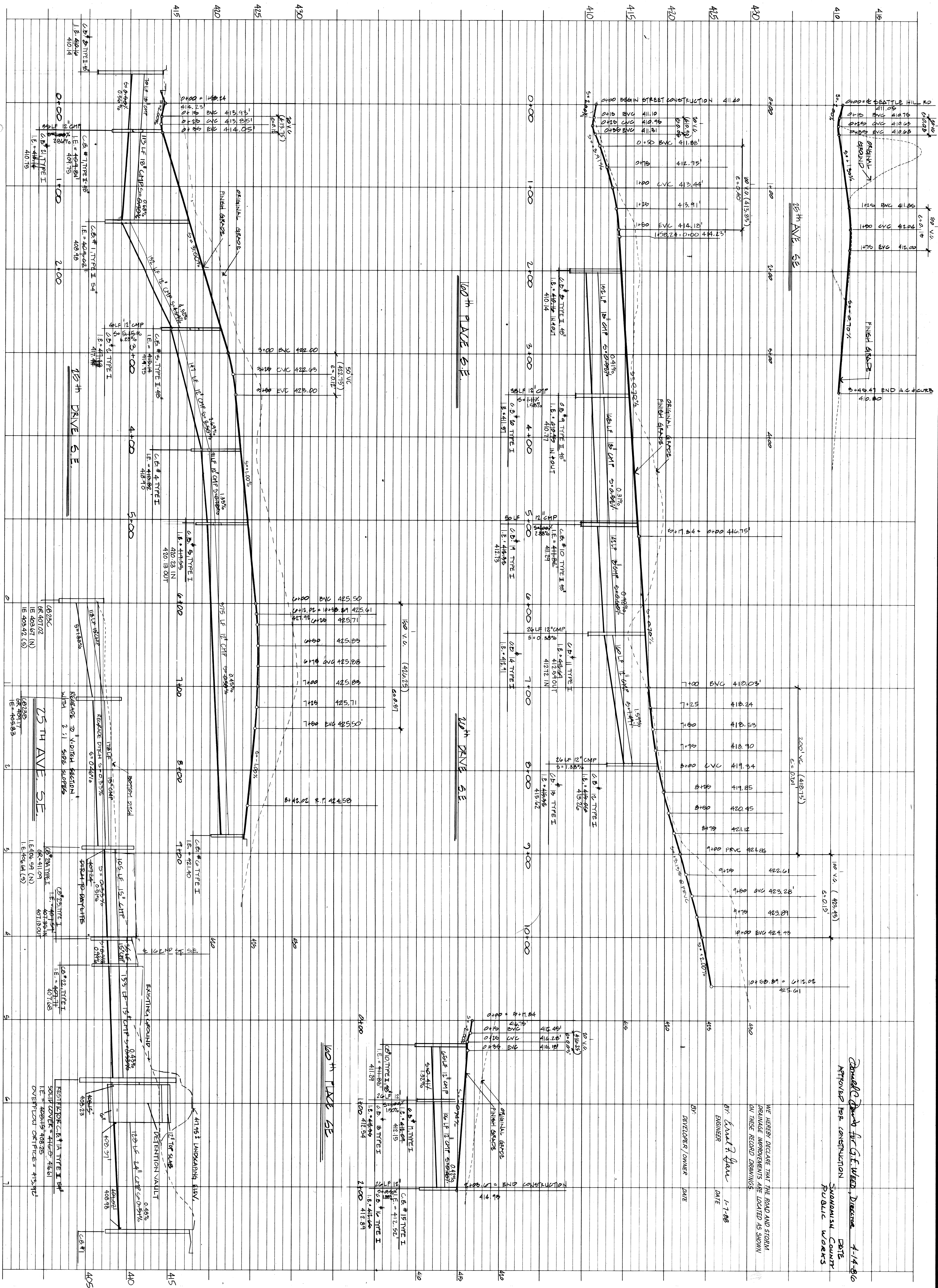
COUNTRYWOOD HOMES, INC.
1410 BEL-RED RD.
BELLEVUE, WA 98007
571-1192

SECTION OF 25th S.W.A. SEC. 8 T24N, E2E W.M.

Approved for Construction
Snohomish County Date
Public Works



- NOTES:
1. ALL CONSTRUCTION SHALL BE TO THE STANDARDS AND SPECIFICATIONS OF SNOHOMISH COUNTY, WASHINGTON.
 2. STORM PIPE SHALL BE CORRUGATED STEEL PIPE AS FOLLOWS:
12" - 18" 16 GAUGE W/ 2" X 2" X 1/2" CORROSION.
18" - 24" 14 GAUGE W/ 2" X 2" X 1/2" CORROSION.
24" - 30" 12 GAUGE W/ 2" X 2" X 1/2" CORROSION.
CONDUIT SHALL BE TYPE I OR TYPE II AS SHOWN ON THE PLANS.
 3. WHEN POSSIBLE, MAINTAIN NATURAL VEGETATION FOR SILT CONTROL.
 4. ALL TEMPORARY EROSION CONTROL AREAS SHALL BE MAINTAINED IN A SATISFACTORY CONDITION UNTIL SUCH PRELIMINARY CHANNEL FACILITIES ARE OPERATIONAL.
 5. AFTER CONSTRUCTION, TEMPORARY EROSION CONTROL AREAS SHOULD BE RESTORED TO ORIGINAL GROUND CONDITIONS.
 6. GRADING OFF OF PROPOSED PUBLIC RIGHT-OF-WAY SHALL COMPLY WITH PERMIT REQUIREMENTS OF CHAPTER 17 UNIFORM BUILDING CODE.
 7. CONSTRUCTION SHALL BE IN ACCORDANCE WITH THE PERMIT TO EXCAVATE AND BACKFILL AT 24-1964 TO SET UP SCHEDULING OR OTHER ACCEPTABLE MEANS.
 8. TEMPORARY STRIP BARRIERS MAY BE REQUIRED IN DITCH ALONG 25th AVENUE S.E. DURING CONSTRUCTION.
 9. TEMPORARY SITE FENCES MAY BE REQUIRED AROUND CATCH BASINS DURING CONSTRUCTION. ADDITIONAL SILE FENCES MAY BE NEEDED AS WEATHER CONDITIONS REQUIRE.
 10. TEMPORARY STRIP BARRIERS MAY BE REQUIRED IN AREAS DISBURSED ON THE SCHEDULED REQUIREMENTS AS FOLLOWS:
A. GRANITE PAVED AREAS TO BE LOCATED IN SAFE AREAS AND ADEQUATELY PROTECTED BY TEMPORARY FENCING TO PROTECT FROM MOTOR VEHICLES.
B. GRANITE PAVED AREAS TO BE PROTECTED BY TEMPORARY FENCING TO PROTECT FROM MOTOR VEHICLES.
C. GRANITE PAVED AREAS TO BE PROTECTED BY TEMPORARY FENCING TO PROTECT FROM MOTOR VEHICLES.
 11. GRANITE PAVED AREAS TO BE PROTECTED BY TEMPORARY FENCING TO PROTECT FROM MOTOR VEHICLES.
 12. GRANITE PAVED AREAS TO BE PROTECTED BY TEMPORARY FENCING TO PROTECT FROM MOTOR VEHICLES.
 13. GRANITE PAVED AREAS TO BE PROTECTED BY TEMPORARY FENCING TO PROTECT FROM MOTOR VEHICLES.
 14. GRANITE PAVED AREAS TO BE PROTECTED BY TEMPORARY FENCING TO PROTECT FROM MOTOR VEHICLES.
 15. GRANITE PAVED AREAS TO BE PROTECTED BY TEMPORARY FENCING TO PROTECT FROM MOTOR VEHICLES.
 16. GRANITE PAVED AREAS TO BE PROTECTED BY TEMPORARY FENCING TO PROTECT FROM MOTOR VEHICLES.
 17. GRANITE PAVED AREAS TO BE PROTECTED BY TEMPORARY FENCING TO PROTECT FROM MOTOR VEHICLES.
 18. GRANITE PAVED AREAS TO BE PROTECTED BY TEMPORARY FENCING TO PROTECT FROM MOTOR VEHICLES.
 19. GRANITE PAVED AREAS TO BE PROTECTED BY TEMPORARY FENCING TO PROTECT FROM MOTOR VEHICLES.
 20. GRANITE PAVED AREAS TO BE PROTECTED BY TEMPORARY FENCING TO PROTECT FROM MOTOR VEHICLES.
 21. GRANITE PAVED AREAS TO BE PROTECTED BY TEMPORARY FENCING TO PROTECT FROM MOTOR VEHICLES.
 22. GRANITE PAVED AREAS TO BE PROTECTED BY TEMPORARY FENCING TO PROTECT FROM MOTOR VEHICLES.
 23. GRANITE PAVED AREAS TO BE PROTECTED BY TEMPORARY FENCING TO PROTECT FROM MOTOR VEHICLES.
 24. GRANITE PAVED AREAS TO BE PROTECTED BY TEMPORARY FENCING TO PROTECT FROM MOTOR VEHICLES.
 25. GRANITE PAVED AREAS TO BE PROTECTED BY TEMPORARY FENCING TO PROTECT FROM MOTOR VEHICLES.
 26. GRANITE PAVED AREAS TO BE PROTECTED BY TEMPORARY FENCING TO PROTECT FROM MOTOR VEHICLES.
 27. GRANITE PAVED AREAS TO BE PROTECTED BY TEMPORARY FENCING TO PROTECT FROM MOTOR VEHICLES.

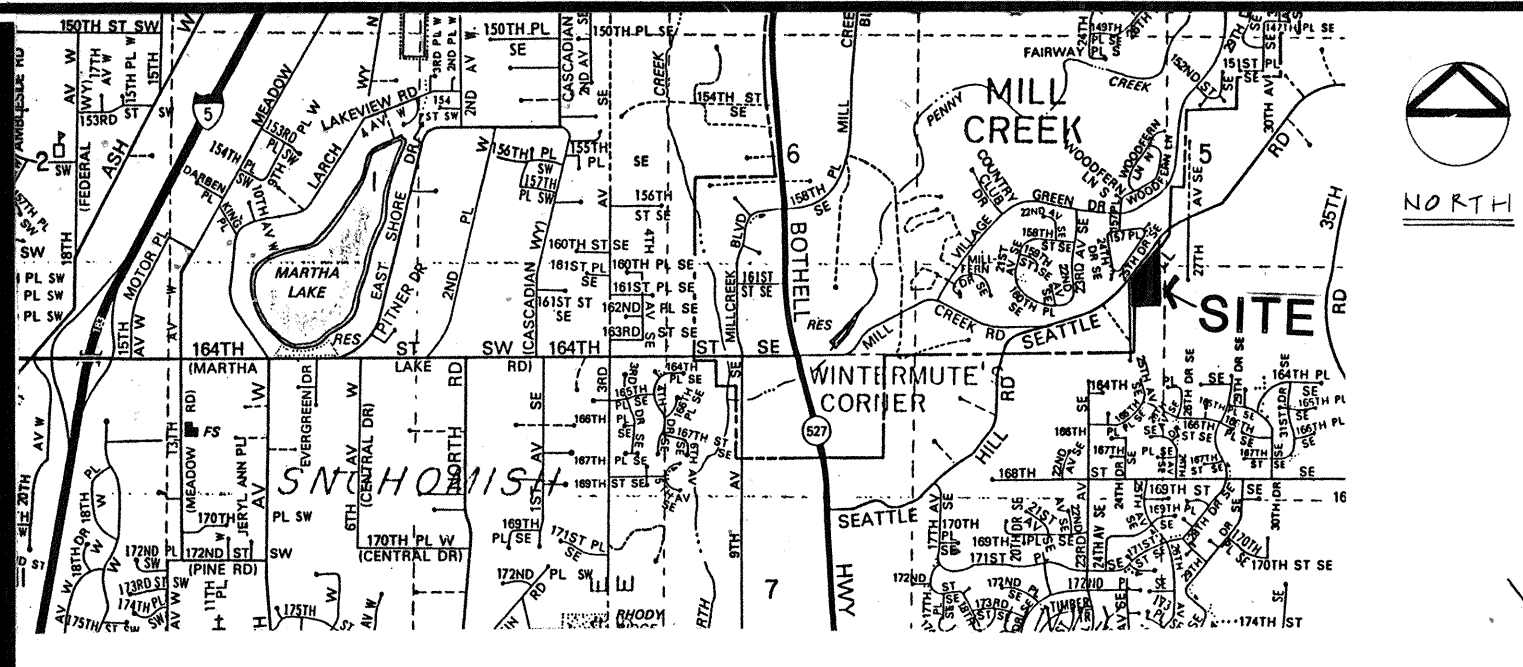


Approved for Construction
 SNOHOMISH COUNTY
 PUBLIC WORKS
 DATE: 4-14-86

WE HEREBY DECLARE THAT THE ROAD AND STORM DRAINAGE IMPROVEMENTS ARE LOCATED AS SHOWN ON THESE RECORD DRAWINGS.

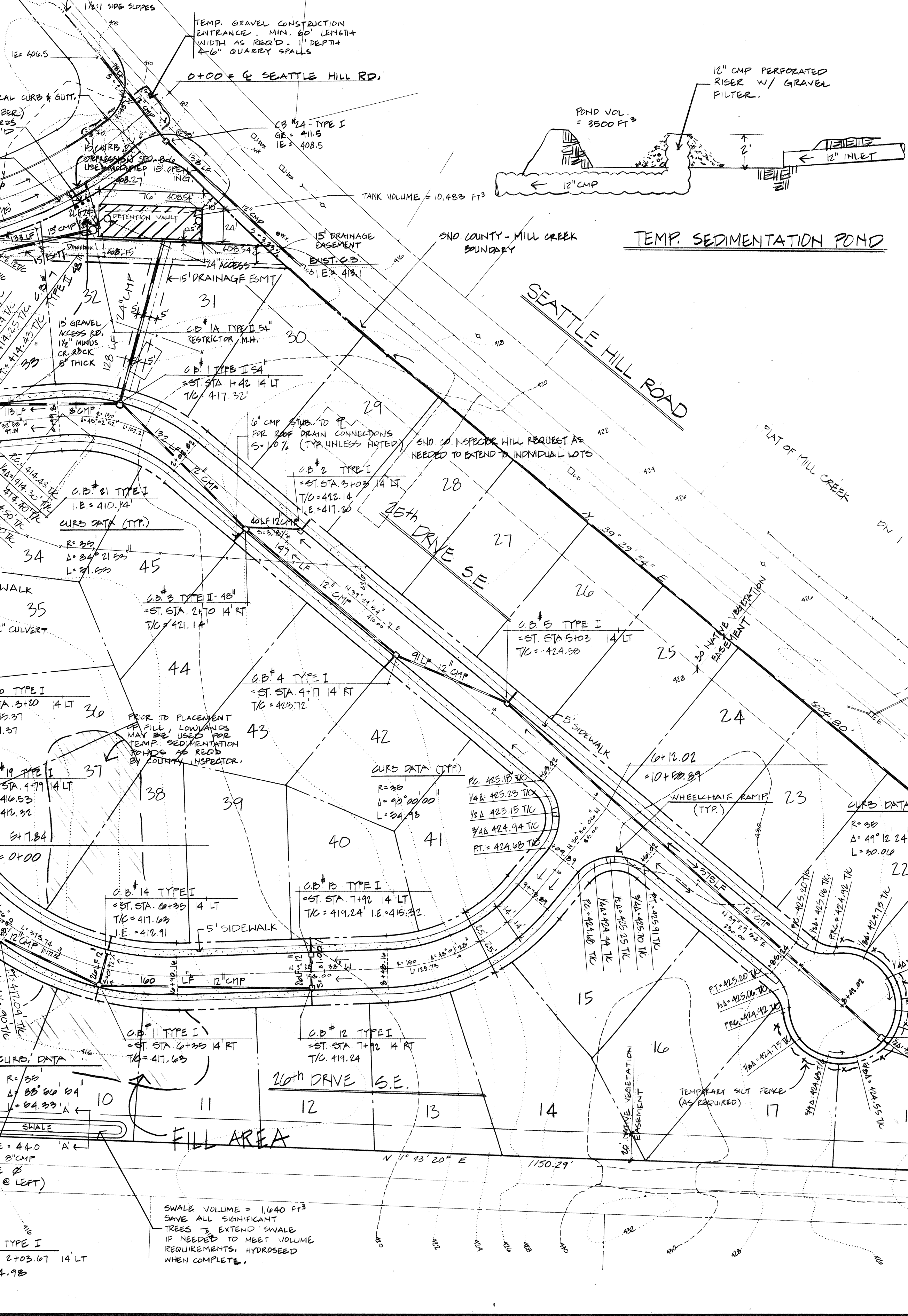
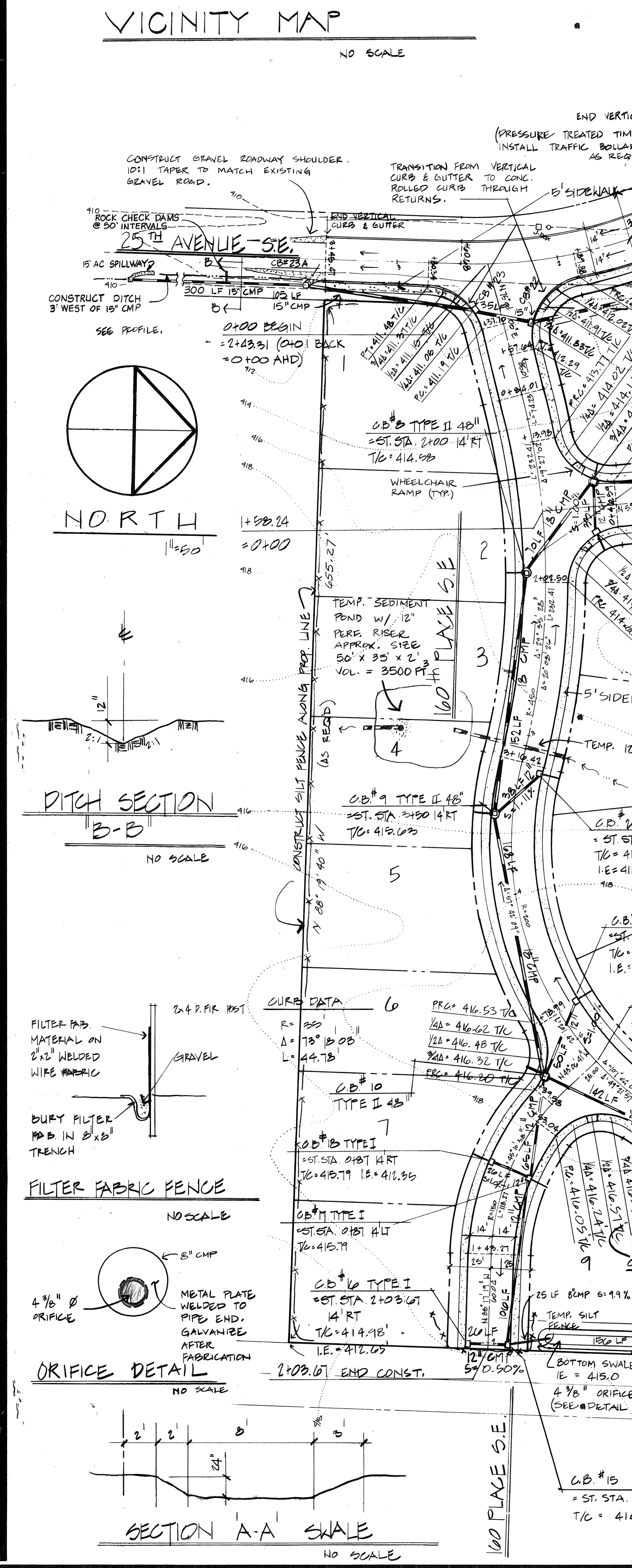
BY: *David Evans*
 ENGINEER
 DATE: 1-7-86

BY: *David Evans*
 DEVELOPER/OWNER
 DATE:

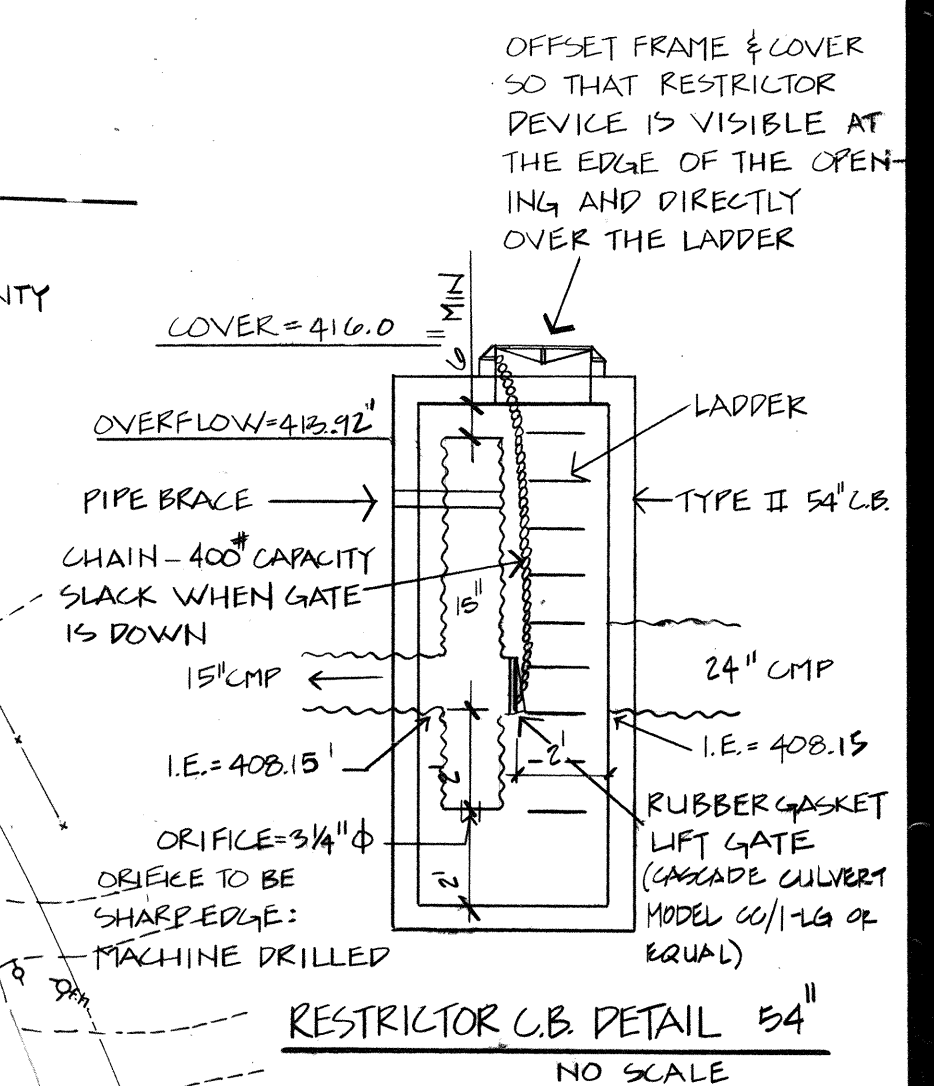
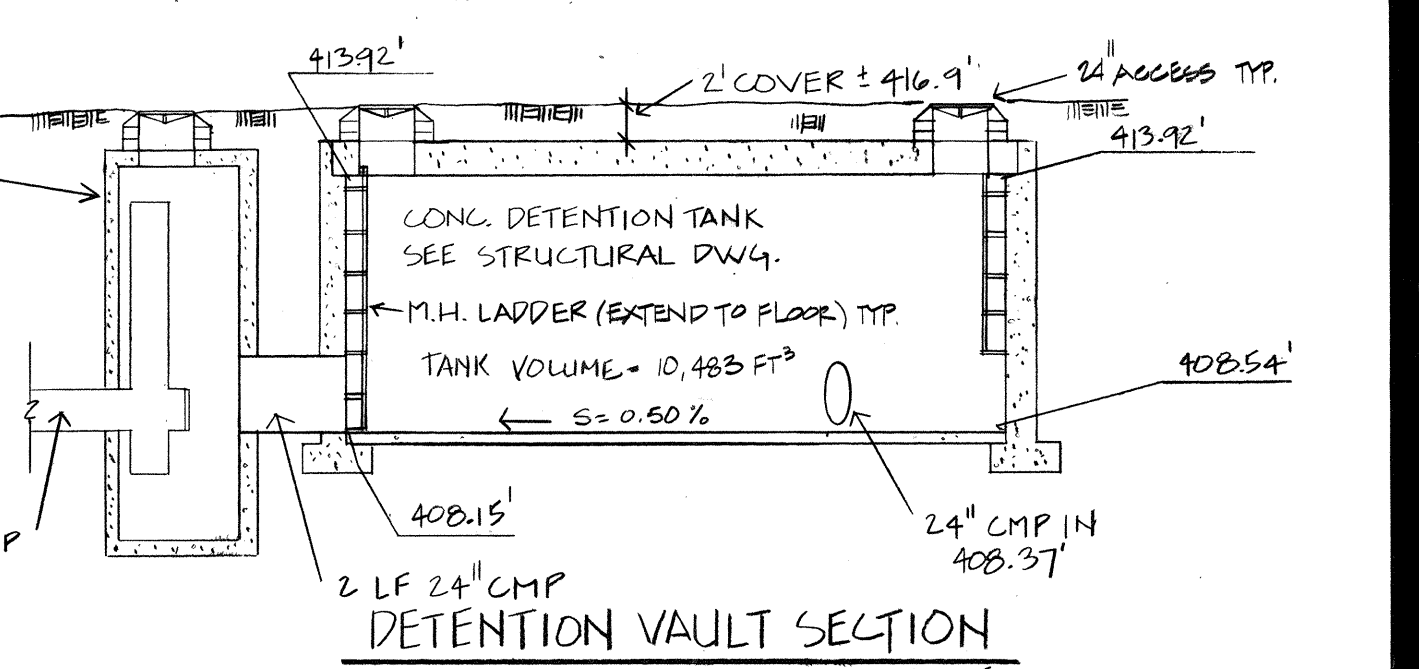
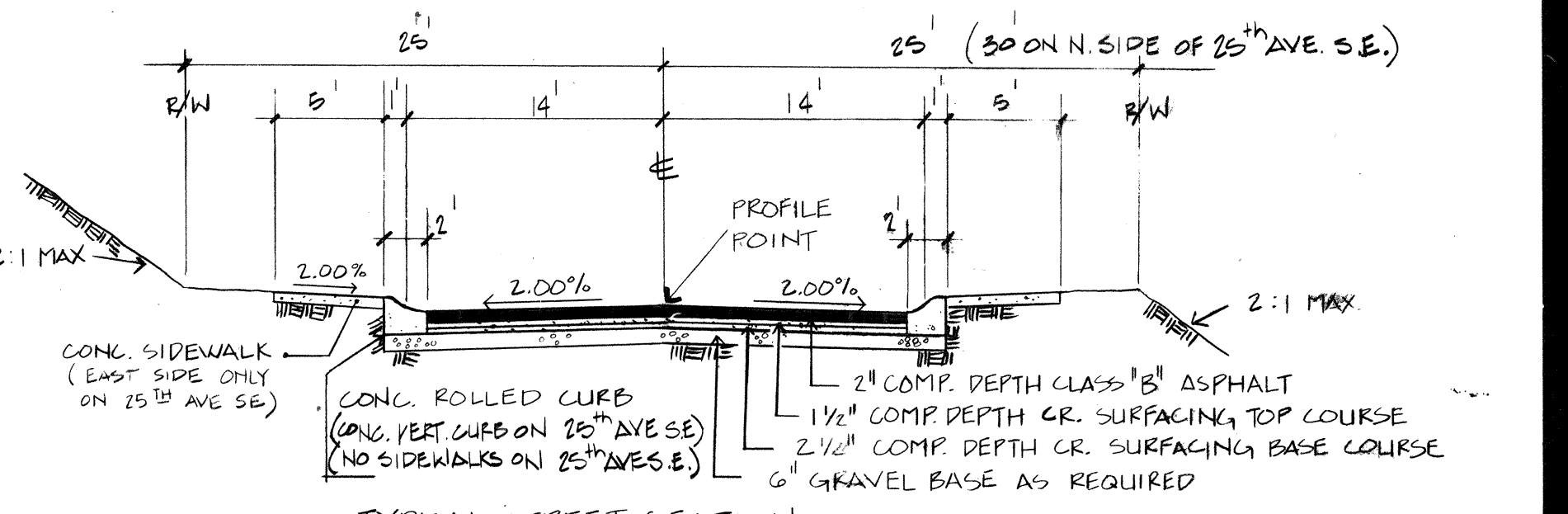
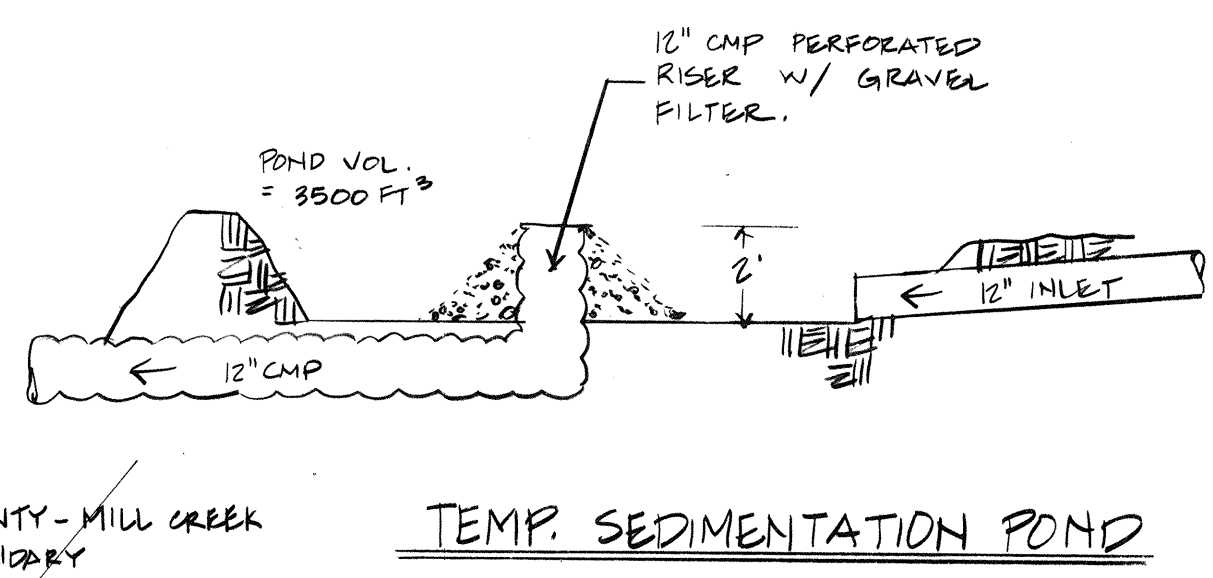


COUNTRYWOOD HOMES INC.
2000 NORTHUP WAY
BELLEVUE, WA 98004
827.9792

Donald C. Davis for G.E. WEED, DIRECTOR 4-14-86
APPROVED FOR CONSTRUCTION SNOHOMISH COUNTY DATE
PUBLIC WORKS



- NOTES:
- ALL CONSTRUCTION SHALL BE TO THE STANDARDS AND SPECIFICATIONS OF SNOHOMISH COUNTY, WASHINGTON.
 - STORM PIPE SHALL BE CORRUGATED STEEL PIPE AS FOLLOWS: 12", 15", 18" AND 24" 1/2 GAUGE W/2 3/4" X 1/2" CORRUGATIONS. CORRUGATED STEEL PIPE SHALL BE FULLY COATED WITH BITUMINOUS COAT (TREATMENT NO. 1). STEEL PIPE SHALL BE GALVANIZED.
 - CATCH BASINS SHALL BE AFWA TYPE I OR TYPE II AS SHOWN ON THE PLANS.
 - WHERE POSSIBLE, MAINTAIN NATURAL VEGETATION FOR SILT CONTROL.
 - ALL TEMPORARY EROSION CONTROL AREAS SHALL BE MAINTAINED IN A SATISFACTORY CONDITION UNTIL SUCH TIME THAT CLEARING AND/OR CONSTRUCTION IS COMPLETED AND PERMANENT DRAINAGE FACILITIES ARE OPERATIONAL.
 - AFTER CONSTRUCTION, TEMPORARY EROSION CONTROL AREAS SHOULD BE RETURNED TO ORIGINAL GROUND CONDITIONS.
 - GRADING OF PROPOSED PUBLIC RIGHT-OF-WAY SHALL COMPLY WITH PERMIT REQUIREMENTS OF CHAPTER 79, UNIFORM BUILDING CODE.
 - PRIOR TO ANY SITE WORK PERTAINING TO DRAINAGE, THE CONTRACTOR SHALL CONTACT THE FIELD COORDINATOR FOR PLANS, UTILITIES AND DRAINAGE AT 249-9464 TO SET UP SCHEDULING.
 - DUE TO FIELD CHANGES (REVISIONS), ENGINEER AS-BUILTS MAY BE REQUIRED PRIOR TO SITE APPROVAL.
 - VEGETATION SHALL BE ESTABLISHED ON AREAS DISTURBED OR ON AREAS OF CONSTRUCTION AS NECESSARY TO MINIMIZE EROSION. THE SEEDING REQUIREMENTS ARE AS FOLLOWS:
 - STOCKPILES ARE TO BE LOCATED IN SAFE AREAS AND ADEQUATELY PROTECTED BY TEMPORARY SEEDING AND MULCHING. HYDRO-SEED PREFERRED.
 - AREAS TO BE ROUGH-GRADED WITH FINISH GRADING TO FOLLOW NEAR PROJECT COMPLETION ARE TO BE SEEDED WITH ANNUAL, PERENNIAL OR HYBRID RYE GRASS. HYDRO-SEED PREFERRED.
 - PREPARATION OF SURFACE: ALL AREAS TO BE SEEDED SHALL BE CULTIVATED TO THE SATISFACTION OF THE ENGINEER. THIS MAY BE ACCOMPLISHED BY DISCING, HARKING, HARROWING OR OTHER ACCEPTABLE MEANS.
 - TEMPORARY STRAW BALES MAY BE REQUIRED IN DITCH ALONG 25TH AVENUE S.E. DURING CONSTRUCTION.
 - TEMPORARY SILT FENCES MAY BE REQUIRED AROUND CATCH BASINS DURING CONSTRUCTION, ADDITIONAL SILT FENCES MAY BE NEEDED AS WEATHER CONDITIONS REQUIRE.
 - ALL PIPE SHALL BE PLACED ON STABLE EARTH, OR IF IN THE OPINION OF THE COUNTY ENGINEER, THE EXISTING FOUNDATION IS UNSATISFACTORY, THEN IT SHALL BE EXCAVATED BELOW GRADE AND BACKFILLED TO GRADE WITH SAND-GRAVEL, CRUSHED STONE OR OTHER SUITABLE MATERIAL. NEVER INSTALL PIPE ON SO2, FROZEN EARTH OR LARGE Boulders OR ROCK.
 - THE BACKFILL SHALL BE PLACED EQUALLY ON BOTH SIDES OF THE PIPE OR PIPE-ARCH IN LAYERS WITH A LOOSE AVERAGE DEPTH OF 6", MAXIMUM DEPTH 8". THOROUGHLY TAMPING EACH LAYER. THESE COMPACTED LAYERS MUST EXTEND FOR ONE DIAMETER ON EACH SIDE OF THE PIPE OR TO THE SIDE OF THE TRENCH. MATERIALS TO COMPLETE THE FILL OVER PIPE SHALL BE THE SAME AS DESCRIBED. REFER TO METHOD STD. SPEC. 7-04.3(3) AND STD. SPEC. 2-03.3(14)C, METHOD B & C.
 - ALL DISTURBED SLOPES SHALL BE SODED OR SEEDED WITH A PERENNIAL GROUND COVER (GRASS) TO PREVENT EROSION.
 - ALL GRATES (INLETS) SHALL BE DERESSED 0.1 FEET BELOW PAVEMENT LEVEL.
 - ALL CATCH BASINS TO BE TYPE I UNLESS OTHERWISE NOTED.
 - THE CONTRACTOR SHALL BE RESPONSIBLE FOR ADJUSTING ALL MANHOLE, INLET, AND CATCH BASIN FRAMES AND GRATES JUST PRIOR TO POURING OF CURBS AND PAVING.
 - ALL CATCH BASINS WITH A DEPTH OVER 5.0 FEET TO THE FLOWLINE SHALL BE TYPE II (MANHOLE).
 - ALL TYPE II CATCH BASINS SHALL HAVE LOCKING LIDS.
 - ALL FILLS SHALL BE COMPACTED TO A MINIMUM OF 95% OF MAXIMUM DENSITY BY MODIFIED PROCTOR TEST.
 - CATCH BASINS, TYPE I, SHALL BE SPECIFIED AS IN STANDARD PLAN NO. 52 OF AFWA STANDARDS AND SPECIFICATIONS, OR APPROVED EQUAL.
 - STANDARD LADDER STEPS SHALL BE PROVIDED IN ALL CATCH BASINS/MANHOLES EXCEEDING 4 FEET IN DEPTH.
 - CATCH BASIN FRAME AND GRATES SHALL BE OLYMPIC FOUNDRY MODEL 5435, 5435A OR 50503A, LOCKING TYPE OR EQUAL. MODEL 5435A IS REFERRED TO AS A "STRUCTURE INLET" ON THE PLAN. MODEL 50503A IS REFERRED TO AS A "ROLLED GRATE INLET" ON THE PLAN.
 - ALL CULVERT PIPE SHALL BE INSTALLED WITH CLASS "B" BEDDING IN ACCORDANCE WITH AFWA STANDARDS.
 - BACKFILL TRENCH OF CULVERT PIPES IN LIFTS OF 6" - 8" AND COMPACT TO 95% RELATIVE COMPACTION UNDER ROADWAYS AND 90% RELATIVE COMPACTION OFF ROADWAYS.
 - PRIOR TO SIDEWALK CONSTRUCTION, THE COUNTY INSPECTOR WILL EVALUATE INDIVIDUAL LOT DRAINAGE AND DIRECT THE INSTALLATION OF CATCH BASIN STUBOUTS AS REQUIRED. STUBS SHALL BE MARKED WITH A 2" X 4" LOCATIONS OF THESE INSTALLATIONS SHALL BE PLACED ON THE AS-BUILT CONSTRUCTION PLANS AND SUBMITTED TO THE COUNTY. SEE NOTE ON INDIVIDUAL PLAN SHEETS.



NOTE: ALL STEEL PARTS + SURFACES MUST BE GALVANIZED + COATED WITH ASPHALT (TREATMENT NO. 1 OR BETTER).

MILL CREEK ESTATES STREET AND STORM DRAINAGE PLAN

COUNTRYWOOD HOMES, INC.
14410 BEL-RED RD., BELLEVUE, WA 98007
360-441-2923

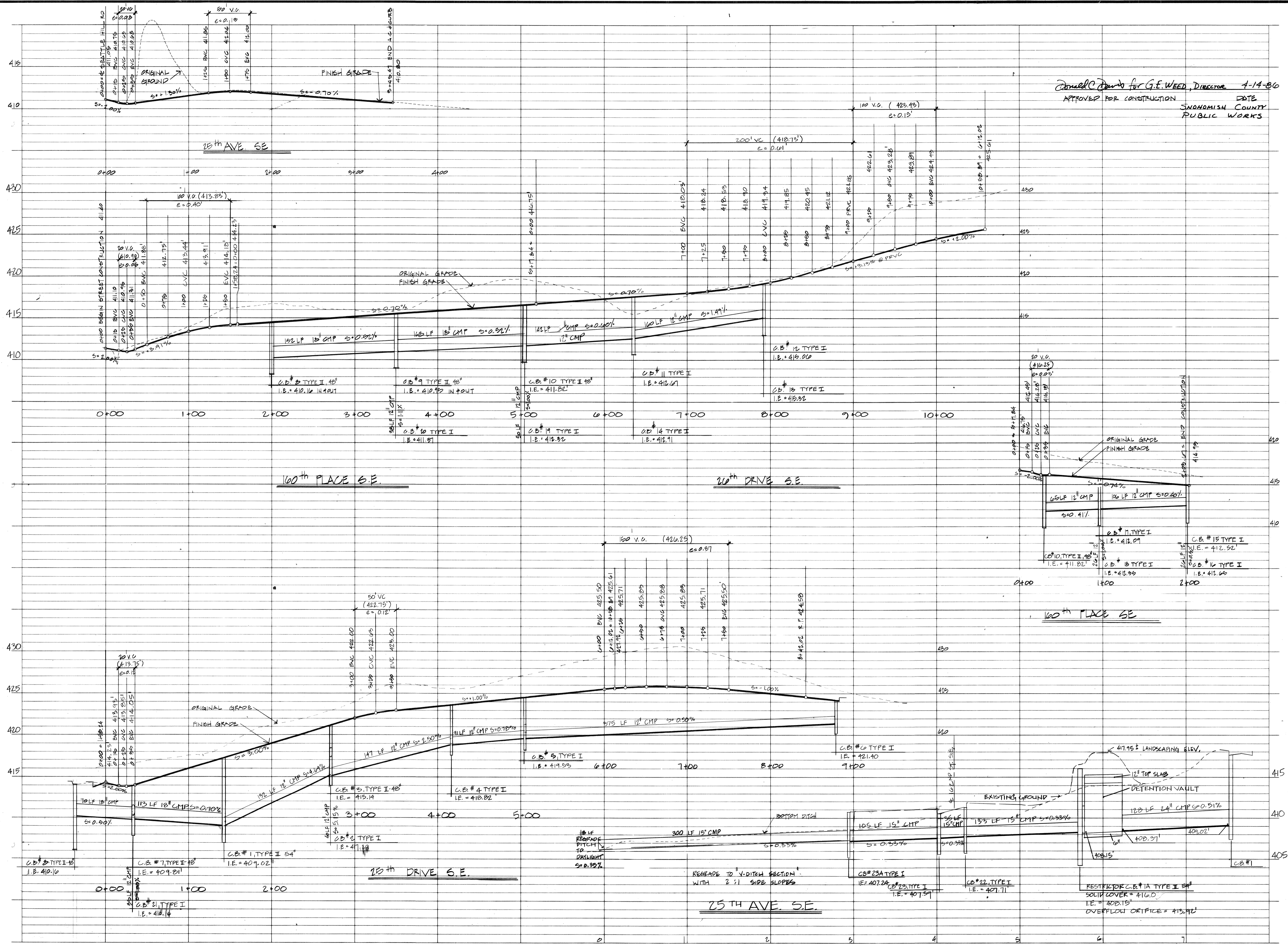
DAVID EVANS AND ASSOCIATES, INC.
301 10TH AVENUE, BELLEVUE, WA 98004-2068-5571

REV. 5-11-86 STORM ON 25TH AVENUE
REV. 4-11-86 PER COUNTY
REV. 9-21-86
REV. 3-11-86
REV. 3-10-86 PER COUNTY

SCALE 1"=50'
DATE NOV. 1985
FILE ENR2102

1 OF 2 SHEETS
DESIGN: G.L., M.H.
DRAWN: G.L., S.G.
CHECKED: E.F.G.

HDEV-269



Approved for Construction
 APPROVED FOR CONSTRUCTION DATE
 SNOWHOMISH COUNTY PUBLIC WORKS

MILL CREEK ESTATES
COUNTRYWOOD HOMES, INC.
 SNOWHOMISH COUNTY, WASHINGTON
STREET AND STORM DRAINAGE PROFILES

DEDA
 DAVID EVANS AND ASSOCIATES, INC.
 501 10th Avenue SE, Bellevue, WA 98004-2066/425-3571
 Snohomish County Public Works

2
 SHEETS OF 2
 SCALE: 1" = 5' V., 1" = 50' H. & G.L.
 DATE: Nov. 1985
 FILE: ENNY 014

REV. 8-11-86 STORM DRAIN 25TH AVENUE
 REV. 8-11-86
 REV. 3-10-86 SEE COUNTY
 REV. 8-11-86

REVISIONS